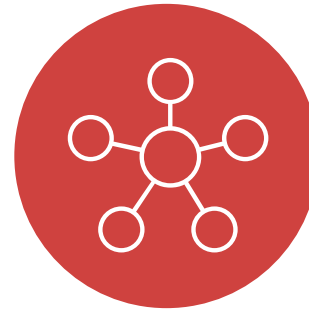
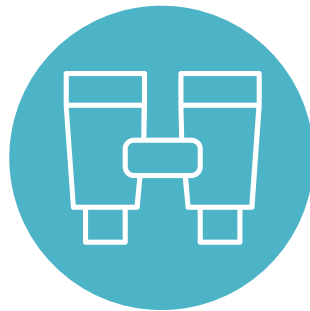


Circulaire gevels, hoe zit dat precies?

Stingo Huurdeman, VMRG

WELKOM



2007



127



152



€ 860

2016



93



105



€ 652

Marktcijfers



84%



16%



81%



19%



89%



11%

De **VMRG** is een vereniging van **gevelbouwers** die, door **samenwerking** met haar **partners** in de branche, streeft naar een **optimaal comfort** voor de **eindgebruiker**, **zonder verspilling van grondstoffen.**

Door continue **product- en procesverbetering, innovatie, opleiding en service**, wordt de **waarde** van **uw gebouw** op **lange termijn gegarandeerd**

A dramatic, monochromatic blue-toned photograph of a sailboat on a cliff. The sailboat is positioned on the left side of the cliff, with its sails partially unfurled. The cliff edge is visible in the foreground, and the sea extends to the horizon under a cloudy sky with a bright light source, possibly the sun or moon, breaking through the clouds. The overall mood is somber and atmospheric.

“99% procent van de gebruikte materialen, eindigt binnen 6 maanden na aanschaf als afval”









A glowing lightbulb is the central focus of the image, resting on a dark, reflective surface. The bulb is illuminated from within, casting a warm, golden glow. The background is dark, with a blurred light source at the top center, creating a bokeh effect. The overall mood is one of innovation and enlightenment.

“Good, bad or indifferent,
if you are not investing in new technology,
you are going to be left behind.”

Philip Green

SERVICE LEVELS



→ Service level I

Branche faciliteert terugname en hoogwaardig hergebruik van (secundaire) materiaalstromen en certificeert deze en de bijbehorende ketenpartners.

De aangesloten bedrijven garanderen met elkaar terugname van de producten.



01

→ Service level II

De gevelbouw levert een product/dienst combinatie Gevels **blijven voldoen aan de overeengekomen kwaliteitseisen (KPI).**

Gevelbouwer garandeert terugname van de gevels tegen dagwaarde.



02

→ Service level III

De gevelbouw levert product/dienstcombinaties t.b.v. **prestatieovereenkomsten.**

Gevelbouwer levert **periodiek onderhoud, vernieuwing en aanpassing aan veranderende gebruiksbehoeften.**

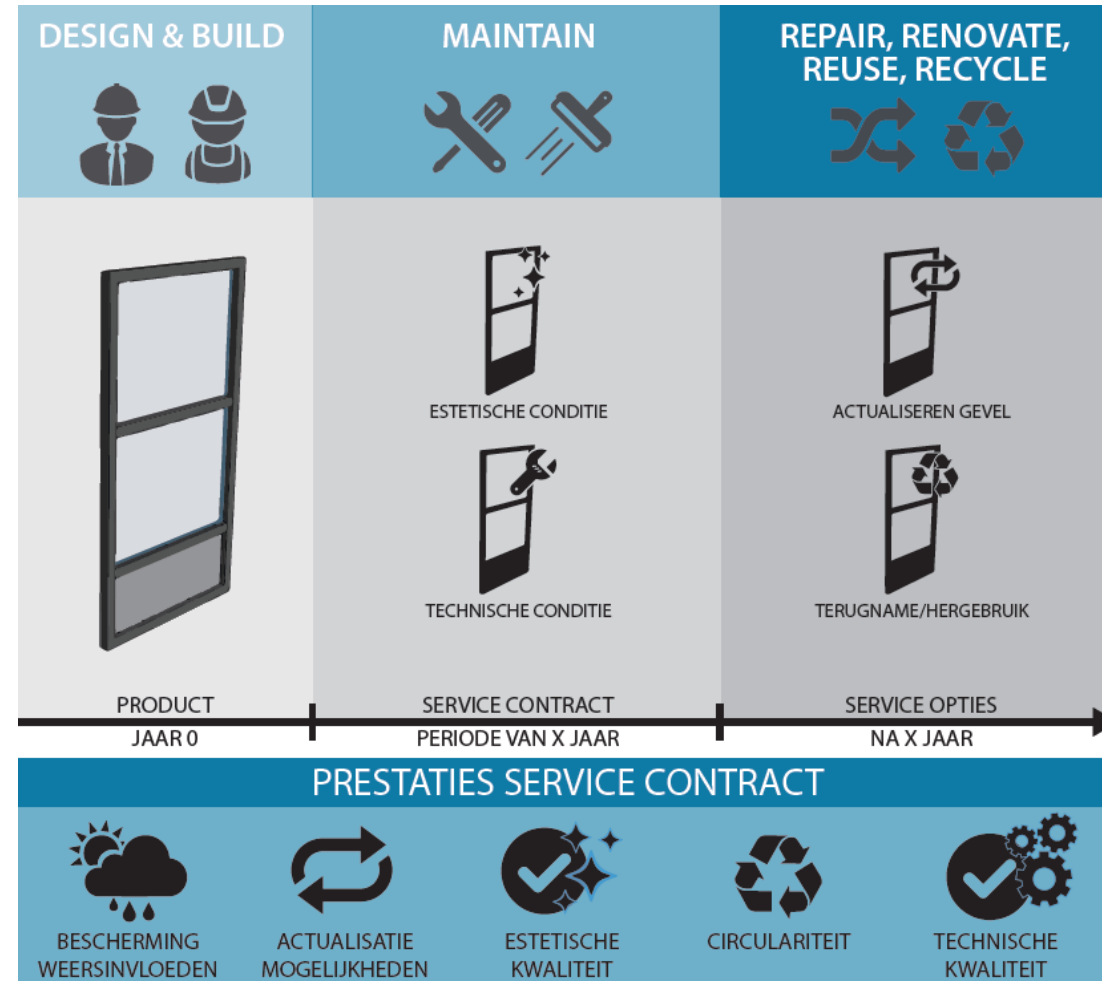


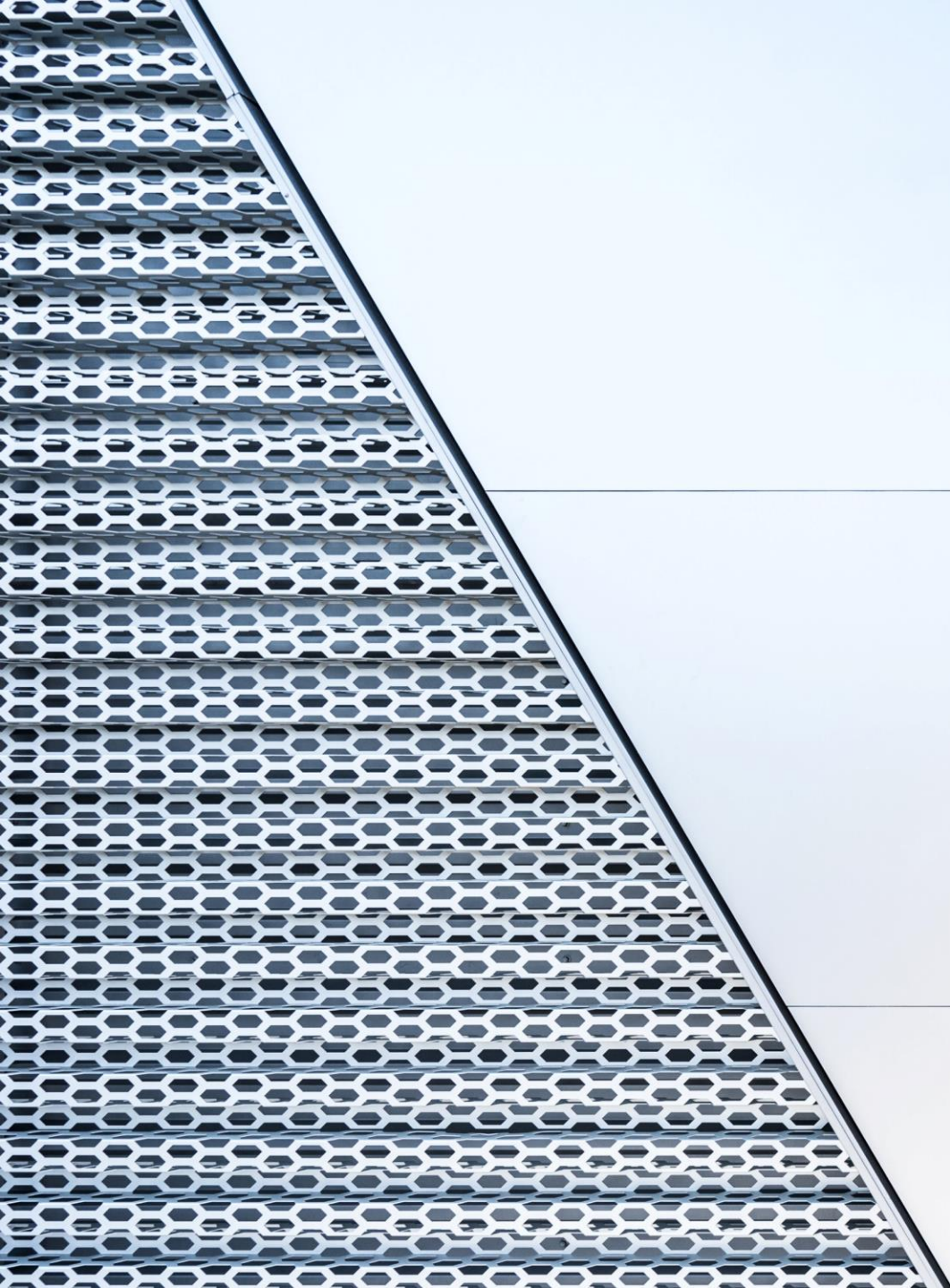
03

BUREAU CIRCULAIRE GEVELECONOMIE



SERVICE LEVEL II





GUARANTEED FRESH
Until printed date or this snack's on us.

QUESTIONS OR COMMENTS?
Weekdays 9:00am to 4:30pm CT
1-800-352-4477/email or chat at fritolay.com

Nutrition Facts

Serving Size 1 package
Servings Per Container 1

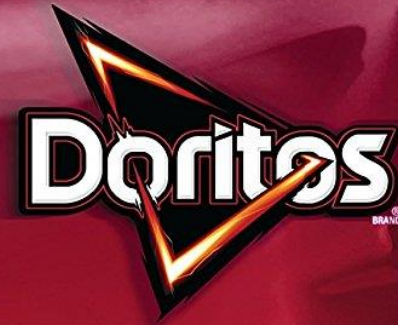
Amount Per Serving	
Calories 240	Calories from Fat 120
% Daily Value*	
Total Fat 14g	22%
Saturated Fat 2g	10%
Trans Fat 0g	
Cholesterol 0mg	0%
Sodium 360mg	15%
Total Carbohydrate 28g	9%
Dietary Fiber 2g	7%
Sugars less than 1g	

Protein 3g	
Vitamin A 2%	• Vitamin C 0%
Calcium 2%	• Iron 2%
Thiamin 2%	• Vitamin B6 4%

* Percent Daily Values are based on a 2,000 calorie diet. Your daily values may be higher or lower depending on your calorie needs:

	Calories:	2,000	2,500
Total Fat	Less than	65g	80g
Sat Fat	Less than	20g	25g
Cholesterol	Less than	300mg	300mg
Sodium	Less than	2,400mg	2,400mg
Total Carbohydrate		300g	375g
Dietary Fiber		25g	30g

Calories per gram:



**FOR MORE
BOLD
EXPERIENCES**

Find us on:
facebook.com/doritosusa

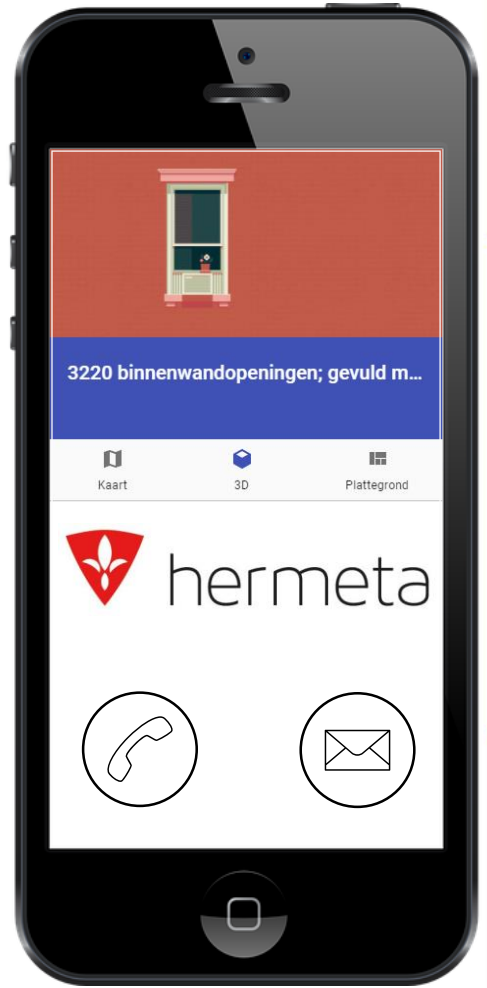
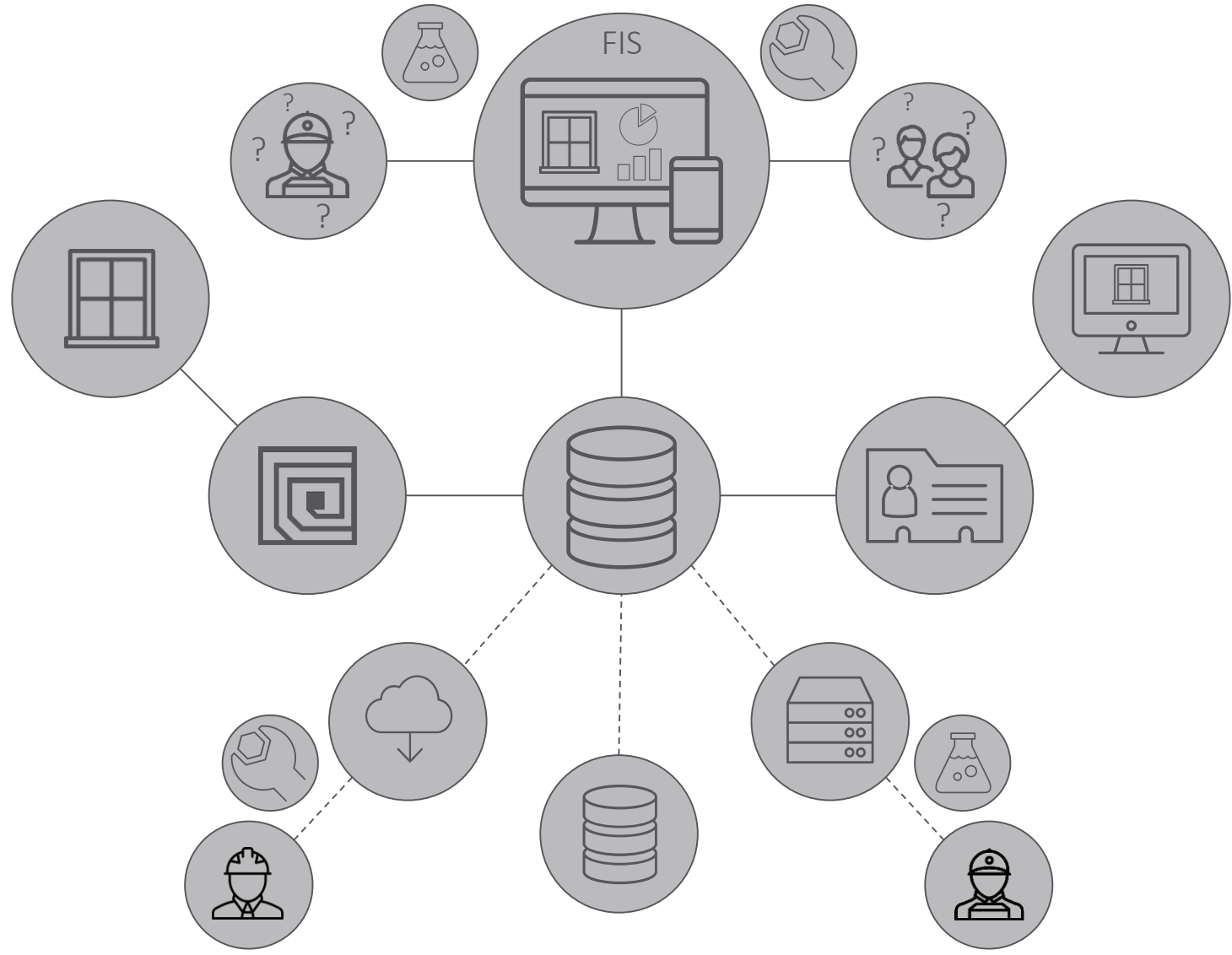
Follow us on Twitter
[@doritos](https://twitter.com/doritos)





Het ontbreken
van de juiste
informatie,
voor
de juiste persoon,
op het juiste
moment.





NIEUWBOUW



BESTAANDE BOUW



LOGISTIEK



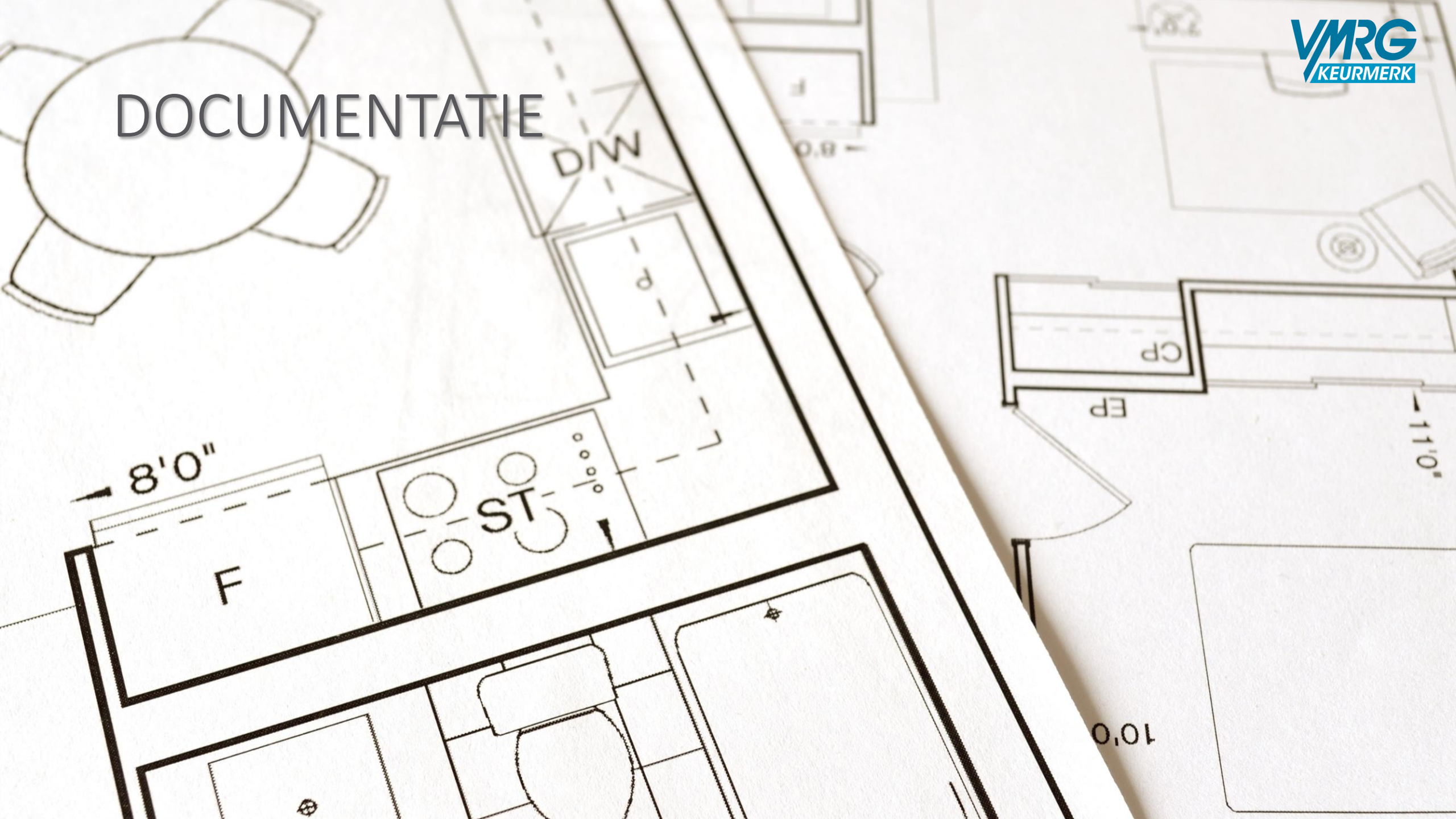
LOGISTIEK



BEHEER EN ONDERHOUD



DOCUMENTATIE



DOCUMENTATIE

Datum	Einheiten	D/02.02.03
Sorte	FLG	Newsprint heatset

Schicht/ Datum	Sorte	FLG	Stoffverhältnis DIP / Etik.	V - Sieb	V - Poperoller	Arbeitsbreite
Stoffauflauf						
Auslaufverhältnis						
Druck						
PD Innendruck						
Druckwaage / Spülung						
Lippenöffnung						
Vorderwand						
Pumpendrehzahl						
Schüttelbock Freq.						
Schüttelbock Hub						
Duoformer D						
Scimmer / Entwässerung						
1. Zone						
2. Zone						
Obersiebentwässerung						
Druck Leiste						
Druck Leiste						
Druck Leiste						
Druck Leiste						
Druck Leiste						
Einlaufwalze Duoformer						
Vakuumeinstel						
1. Vakufoil						
2. Vakufoil / Naß						
Doppelvakut						
Scimmer						
1. Formationszone						
2. Zone (Trockeng)						
Trennsauger						
Flachsauger						
SSW						
PU Haltezone						
PU Preßzone						

Schicht/ Datum	Sorte	FLG	Stoffverhältnis DIP / Etik.	V - Sieb	V - Poperoller	Arbeitsbreite
Stoffauflauf						
Auslaufverhältnis						
Druck						
PD Innendruck						
Druckwaage / Spülung						
Lippenöffnung						
Vorderwand						
Pumpendrehzahl						
Schüttelbock Freq.						
Schüttelbock Hub						
Duoformer D						
Scimmer / Entwässerung						
1. Zone						
2. Zone						
Obersiebentwässerung						
Druck Leiste						
Druck Leiste						
Druck Leiste						
Druck Leiste						
Druck Leiste						
Einlaufwalze Duoformer						
Vakuumeinstel						
1. Vakufoil						
2. Vakufoil / Naß						
Doppelvakut						
Scimmer						
1. Formationszone						
2. Zone (Trockeng)						
Trennsauger						
Flachsauger						
SSW						
PU Haltezone						
PU Preßzone						

Schicht/ Datum	Sorte	FLG	Stoffverhältnis DIP / Etik.	V - Sieb	V - Poperoller	Arbeitsbreite
Stoffauflauf						
Auslaufverhältnis						
Druck						
PD Innendruck						
Druckwaage / Spülung						
Lippenöffnung						
Vorderwand						
Pumpendrehzahl						
Schüttelbock Freq.						
Schüttelbock Hub						
Duoformer D						
Scimmer / Entwässerung						
1. Zone						
2. Zone						
Obersiebentwässerung						
Druck Leiste						
Druck Leiste						
Druck Leiste						
Druck Leiste						
Druck Leiste						
Einlaufwalze Duoformer						
Vakuumeinstel						
1. Vakufoil						
2. Vakufoil / Naß						
Doppelvakut						
Scimmer						
1. Formationszone						
2. Zone (Trockeng)						
Trennsauger						
Flachsauger						
SSW						
PU Haltezone						
PU Preßzone						

Schicht/ Datum	Sorte	FLG	Stoffverhältnis DIP / Etik.	V - Sieb	V - Poperoller	Arbeitsbreite
Stoffauflauf						
Auslaufverhältnis						
Druck						
PD Innendruck						
Druckwaage / Spülung						
Lippenöffnung						
Vorderwand						
Pumpendrehzahl						
Schüttelbock Freq.						
Schüttelbock Hub						
Duoformer D						
Scimmer / Entwässerung						
1. Zone						
2. Zone						
Obersiebentwässerung						
Druck Leiste						
Druck Leiste						
Druck Leiste						
Druck Leiste						
Druck Leiste						
Einlaufwalze Duoformer						
Vakuumeinstel						
1. Vakufoil						
2. Vakufoil / Naß						
Doppelvakut						
Scimmer						
1. Formationszone						
2. Zone (Trockeng)						
Trennsauger						
Flachsauger						
SSW						
PU Haltezone						
PU Preßzone						

Schicht/ Datum	Sorte	FLG	Stoffverhältnis DIP / Etik.	V - Sieb	V - Poperoller	Arbeitsbreite
Stoffauflauf						
Auslaufverhältnis						
Druck						
PD Innendruck						
Druckwaage / Spülung						
Lippenöffnung						
Vorderwand						
Pumpendrehzahl						
Schüttelbock Freq.						
Schüttelbock Hub						
Duoformer D						
Scimmer / Entwässerung						
1. Zone						
2. Zone						
Obersiebentwässerung						
Druck Leiste						
Druck Leiste						
Druck Leiste						
Druck Leiste						
Druck Leiste						
Einlaufwalze Duoformer / Spalt						
Vakuumeinstellungen						
1. Vakufoil						
2. Vakufoil / Naßsauger						
Doppelvakufoil						
Scimmer						
1. Formationszone / Zone						
2. Zone (Trockengehalt)						
Trennsauger						
Flachsauger						
SSW						

Schicht/ Datum	Sorte	FLG	Stoffverhältnis DIP / Etik.	V - Sieb	V - Poperoller	Arbeitsbreite
Stoffauflauf						
Auslaufverhältnis						
Druck						
PD Innendruck						
Druckwaage / Spülung						
Lippenöffnung						
Vorderwand						
Pumpendrehzahl						
Schüttelbock Freq.						
Schüttelbock Hub						
Duoformer D						
Scimmer / Entwässerung						
1. Zone						
2. Zone						
Obersiebentwässerung						
Druck Leiste						
Druck Leiste						
Druck Leiste						
Druck Leiste						
Druck Leiste						
Einlaufwalze Duoformer / Spalt						
Vakuumeinstellungen						
1. Vakufoil						
2. Vakufoil / Naßsauger						
Doppelvakufoil						
Scimmer						
1. Formationszone / Zone						
2. Zone (Trockengehalt)						
Trennsauger						
Flachsauger						
SSW						

05.01.03
 Newsprint
 46,5
 49
 859
 900
 3,075
 1018
 10519
 2,5
 2
 11,5
 12,0
 94,5
 280
 25,0
 35
 32
 64
 4
 70
 70
 150
 150
 120
 defekt
 11,4
 -12
 -27
 -8,5
 -40
 -130
 -180

EIGENDOM



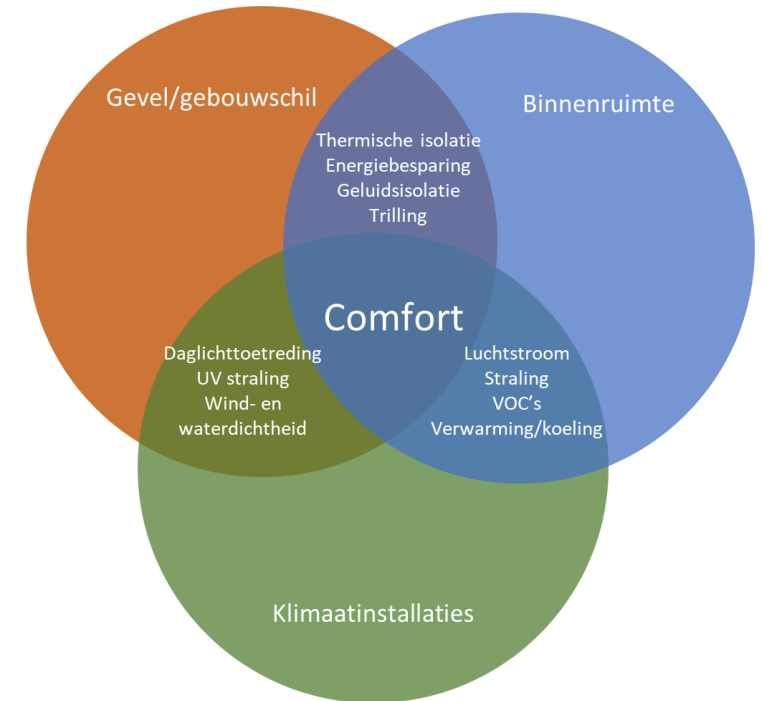
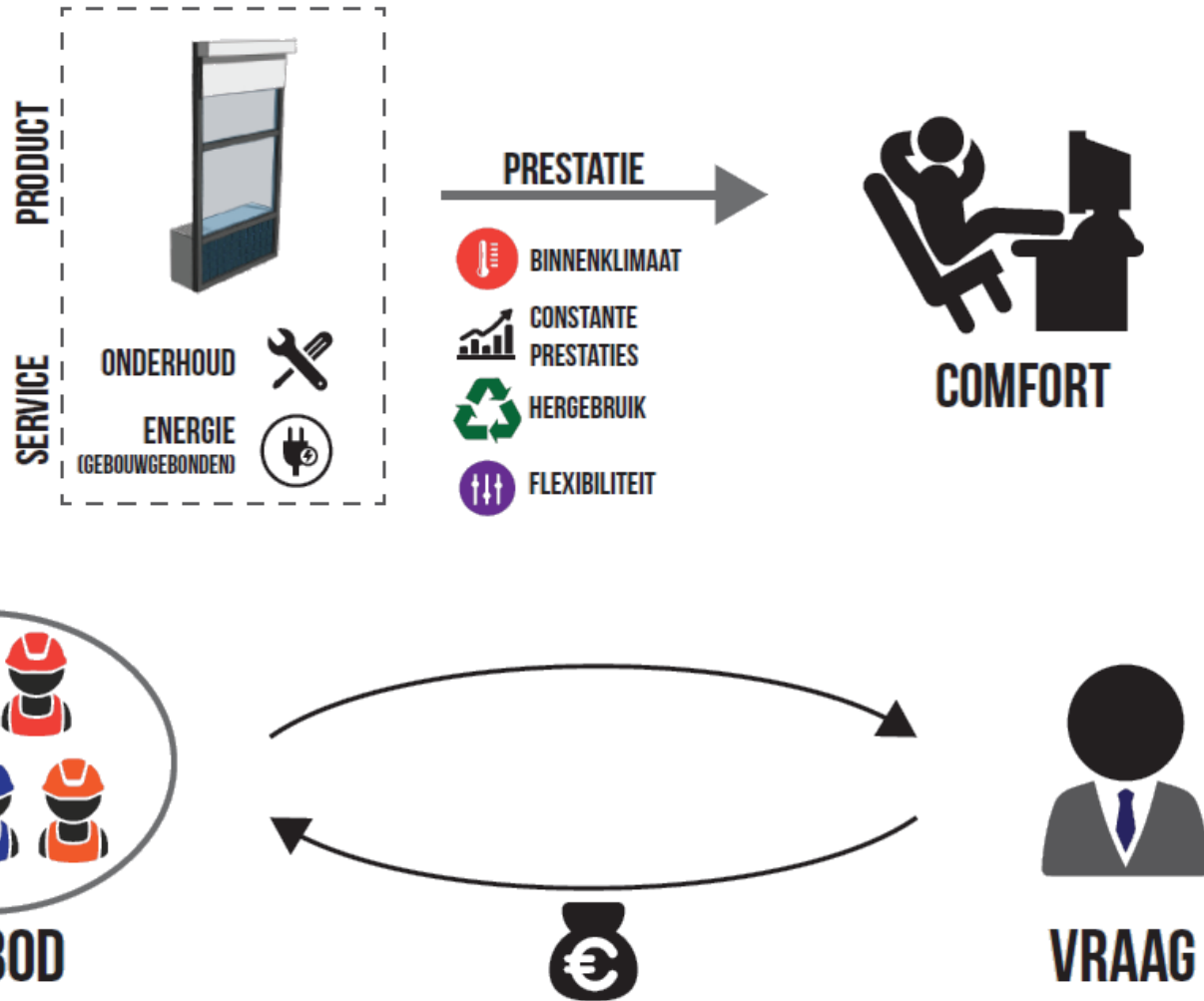
OPSCHALEN

Bier

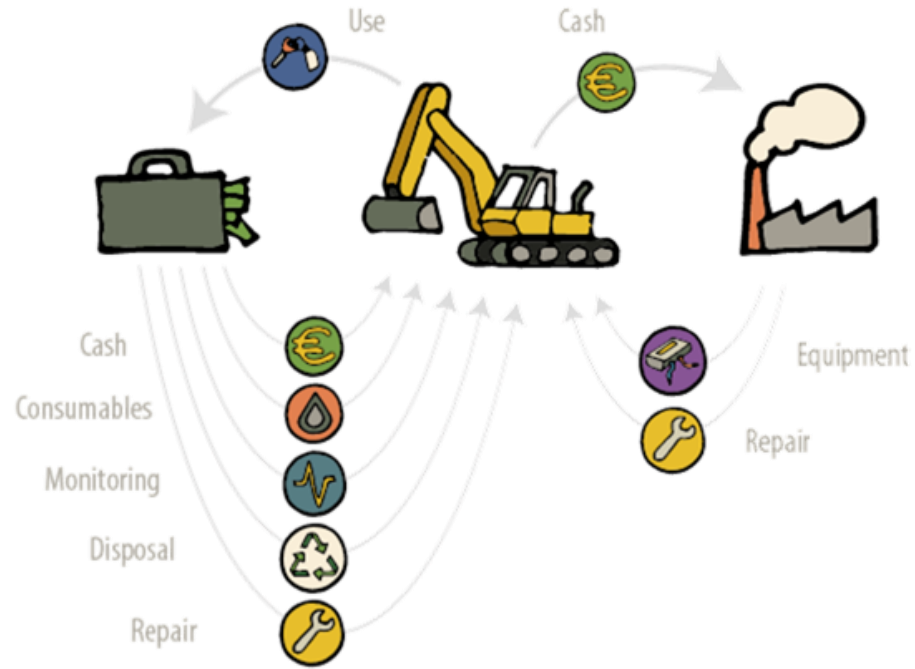


↑

SERVICE LEVEL III

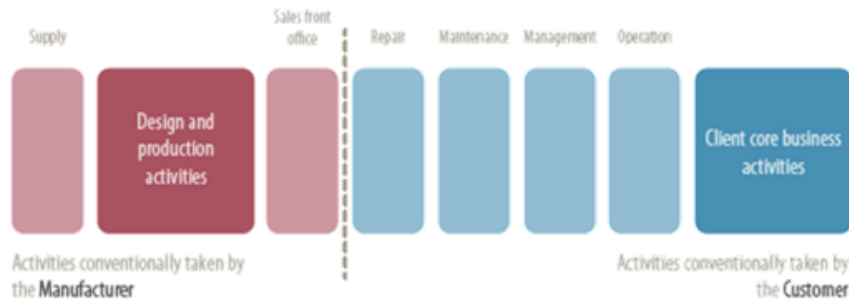


A Product System delivers Products

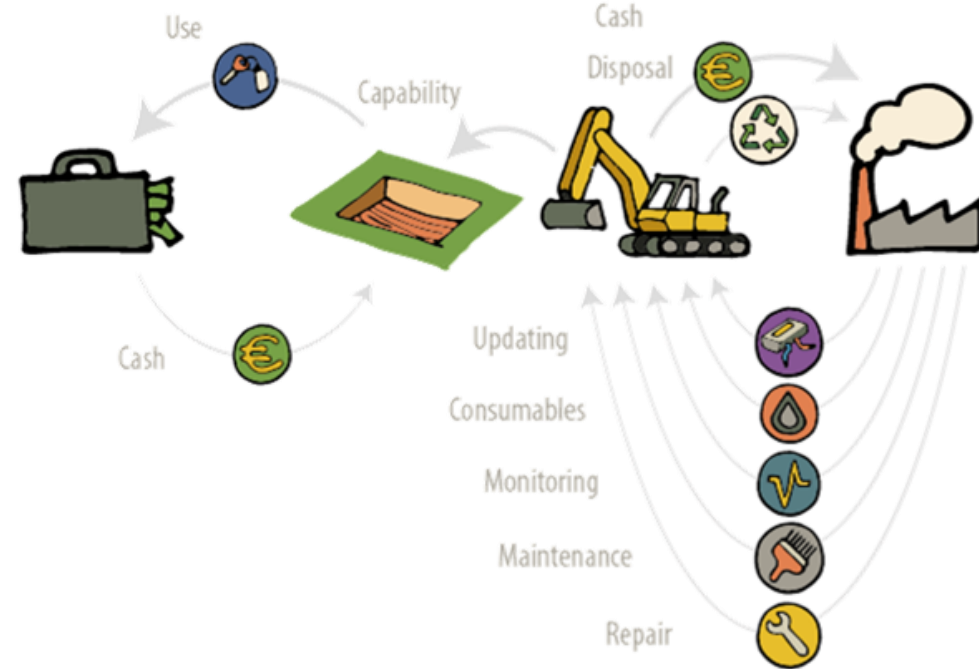


Business Model:

$$+ \text{Sales} (+ \text{Resources}) = + \text{Profit}$$



A Product-Service System delivers Capabilities

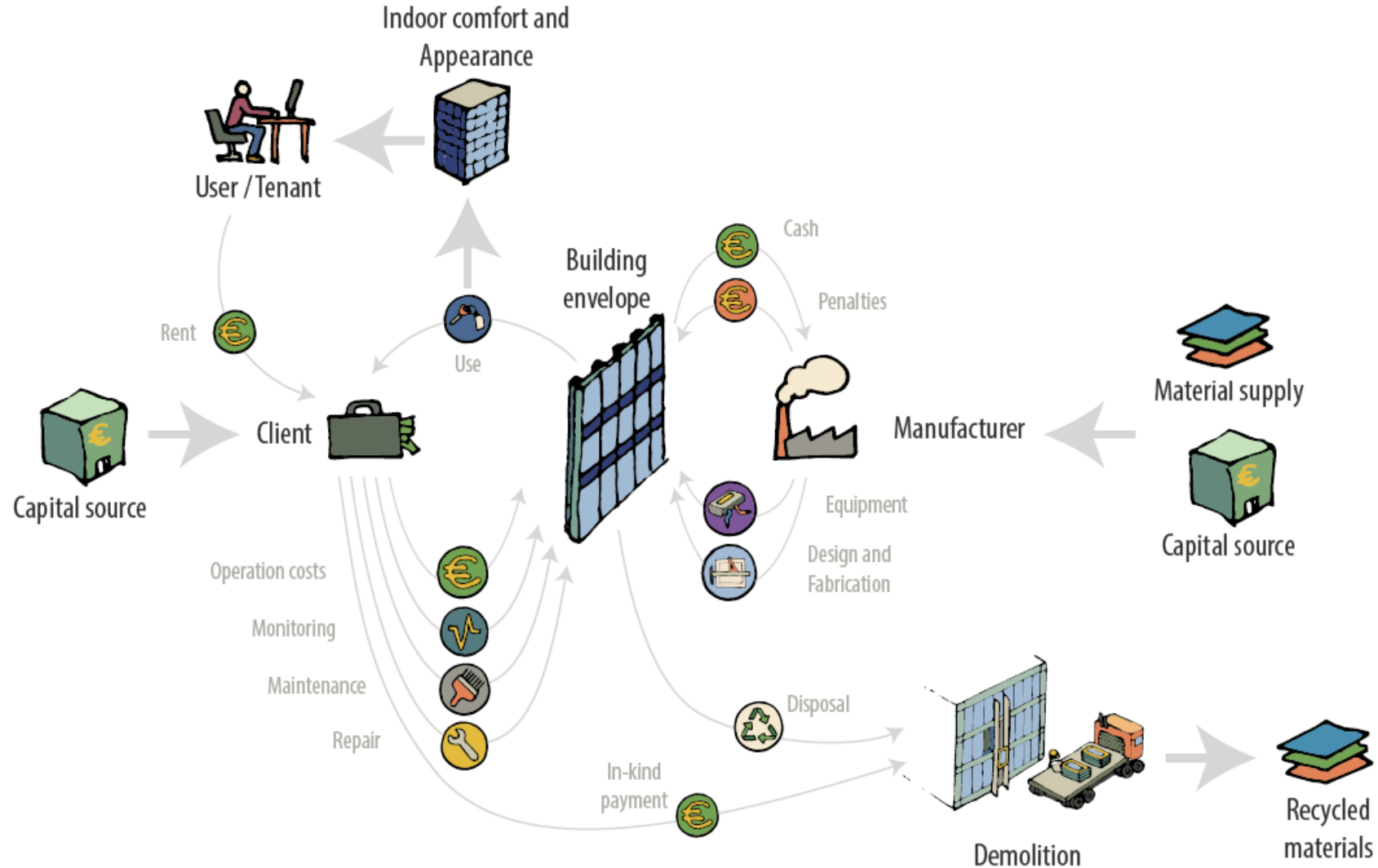


Business Model:

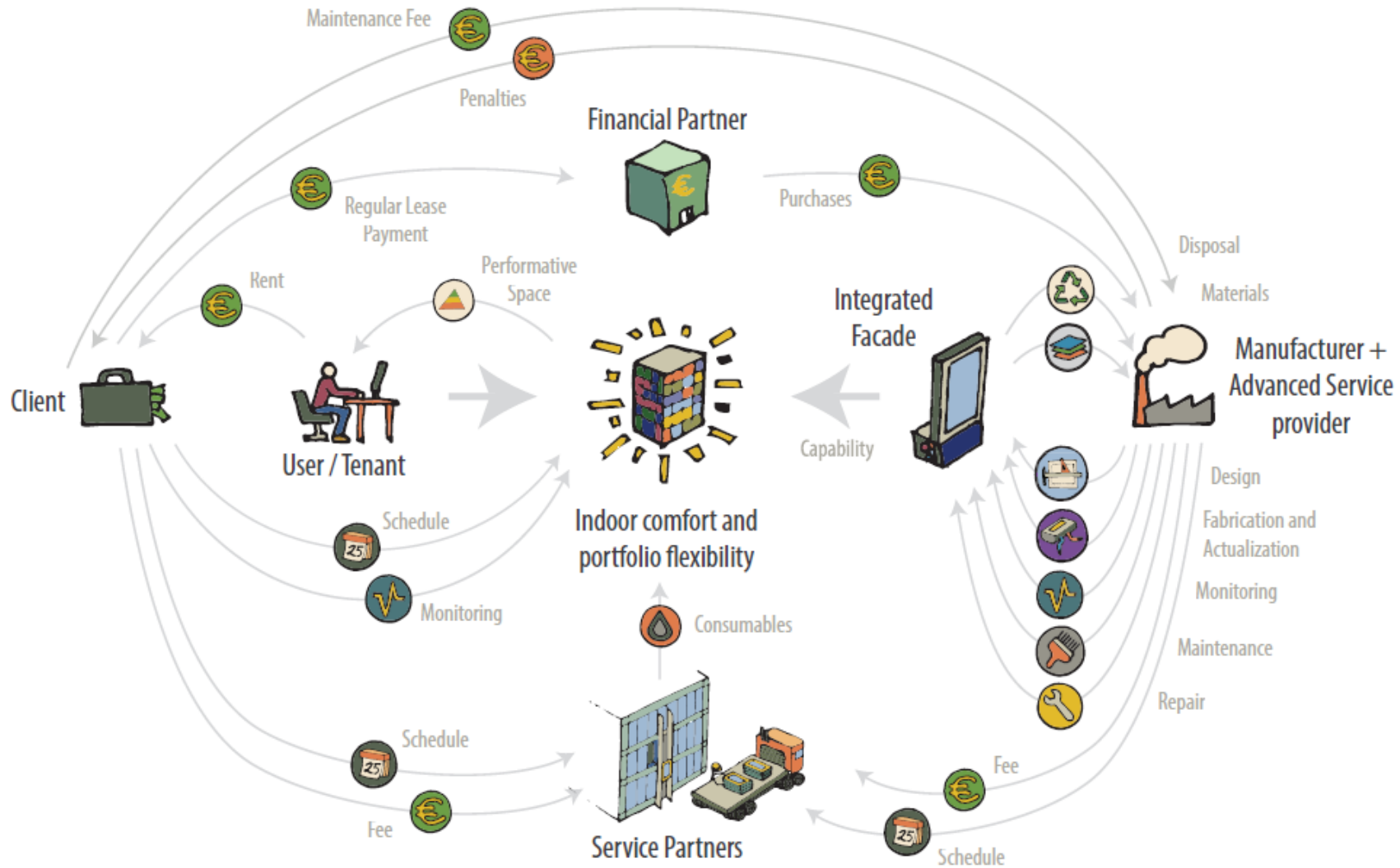
$$+ \text{Performance} (- \text{Resources}) = + \text{Profit}$$



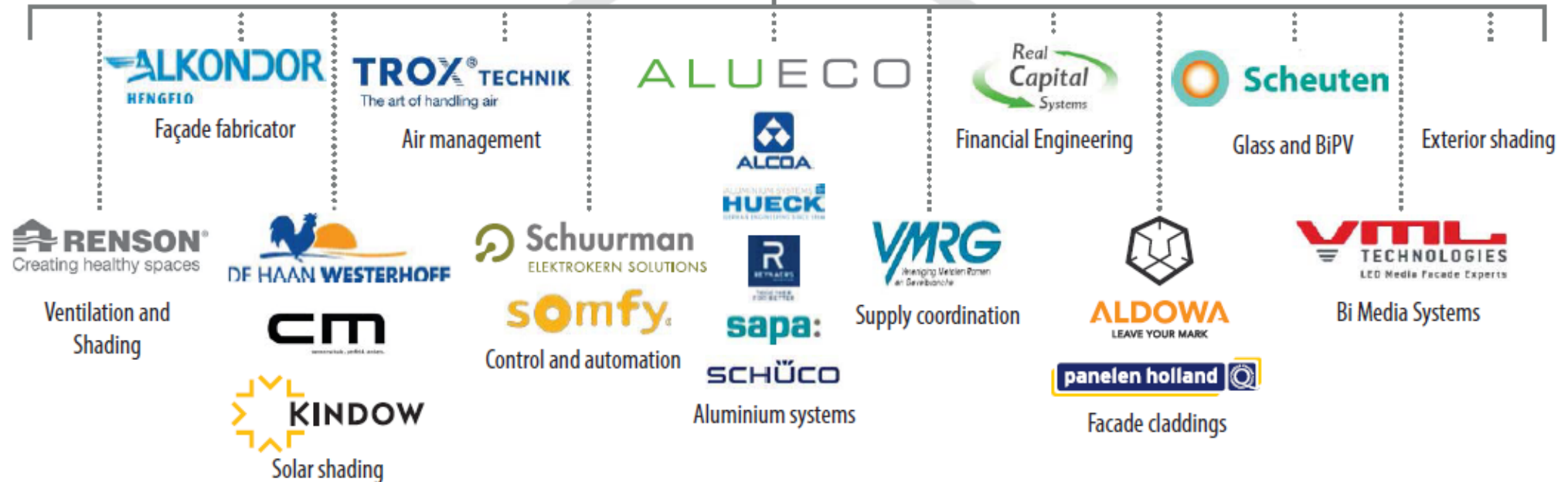
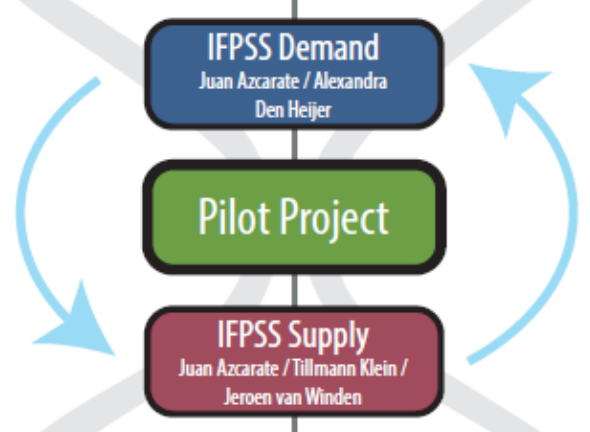
DE GEVEL ALS PRODUCT SYSTEM



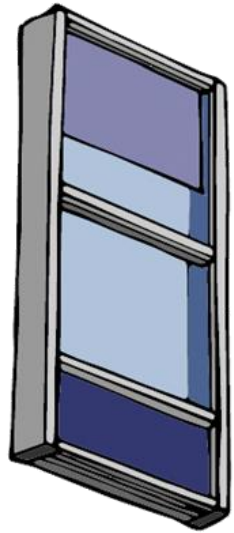
DE GEVEL ALS PRODUCT-SERVICE SYSTEM



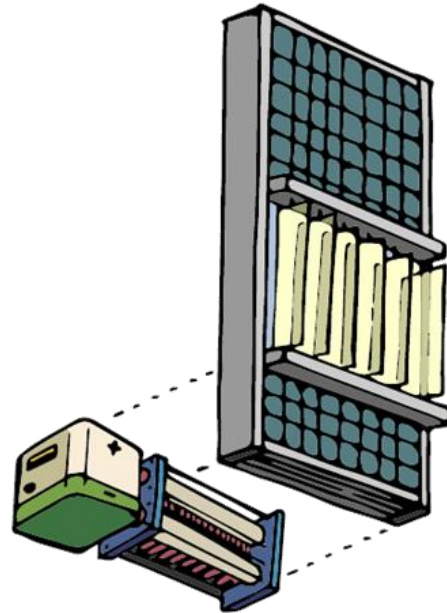
Facilities Management & Real Estate



FYSIEKE GEVEL-MOCKUP VAN DE PSS GEVEL



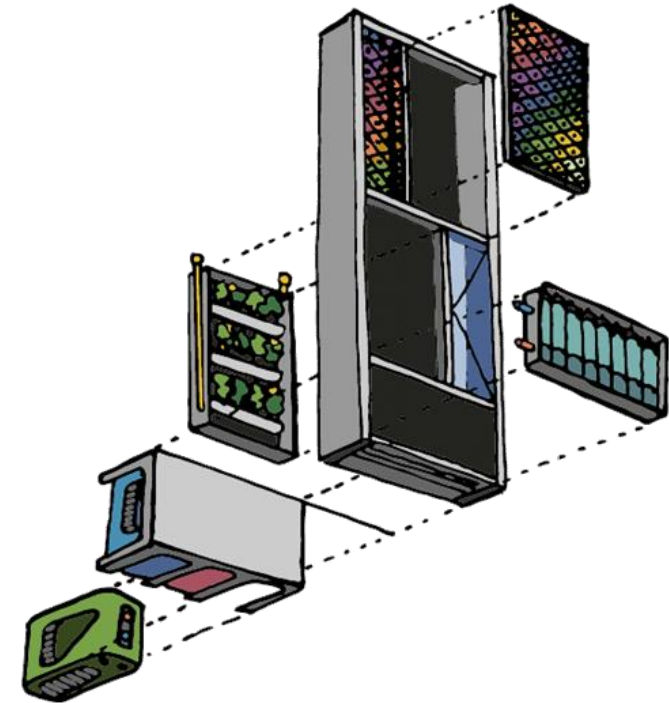
Basispaneel
Standaard
functies



Energie paneel
Energieopslag
Energieopwekking
Warmteopslag



Extra functies
Verwarmen
Koelen
Monitoring
Besturing
Daglichtcontrole



Vooruitstrevend
LED projectie
Groene gevel
Monitoring

TEST FACADE LEASING

Facade leasing is a new way of building facade systems. It allows project owners to benefit from the expertise of facade specialists and to manage the facade system together on a long-term basis. This is a cost-effective and efficient way to build a facade system.

The research project was made possible by:
TU Delft | **ALUECO** | **VMRG** | **QinetiQ-KIC**
ALUECO | **VMRG** | **QinetiQ-KIC**
ALUECO | **VMRG** | **QinetiQ-KIC**

This pilot project aims to create a small range of standardized building systems. It has been implemented and evaluated with the collaboration of:
ALUECO | **VMRG** | **QinetiQ-KIC**
ALUECO | **VMRG** | **QinetiQ-KIC**
ALUECO | **VMRG** | **QinetiQ-KIC**

Health Sustainability of Technology
Faculty of Architecture and the Built Environment
Department of Architectural Engineering & Technology
Facade Research Group

For more information:
tudelft.nl/facadeleasing

01

02

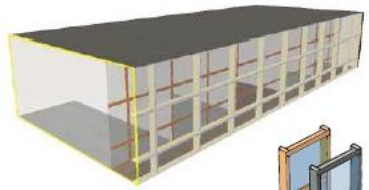
03

04

TU Delft

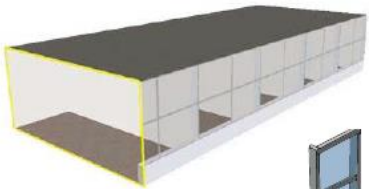


ENERGYVERBRUIK & TCO



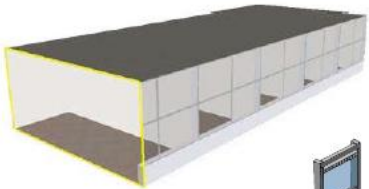
Existing situation | Model Current
Double facade system

100%



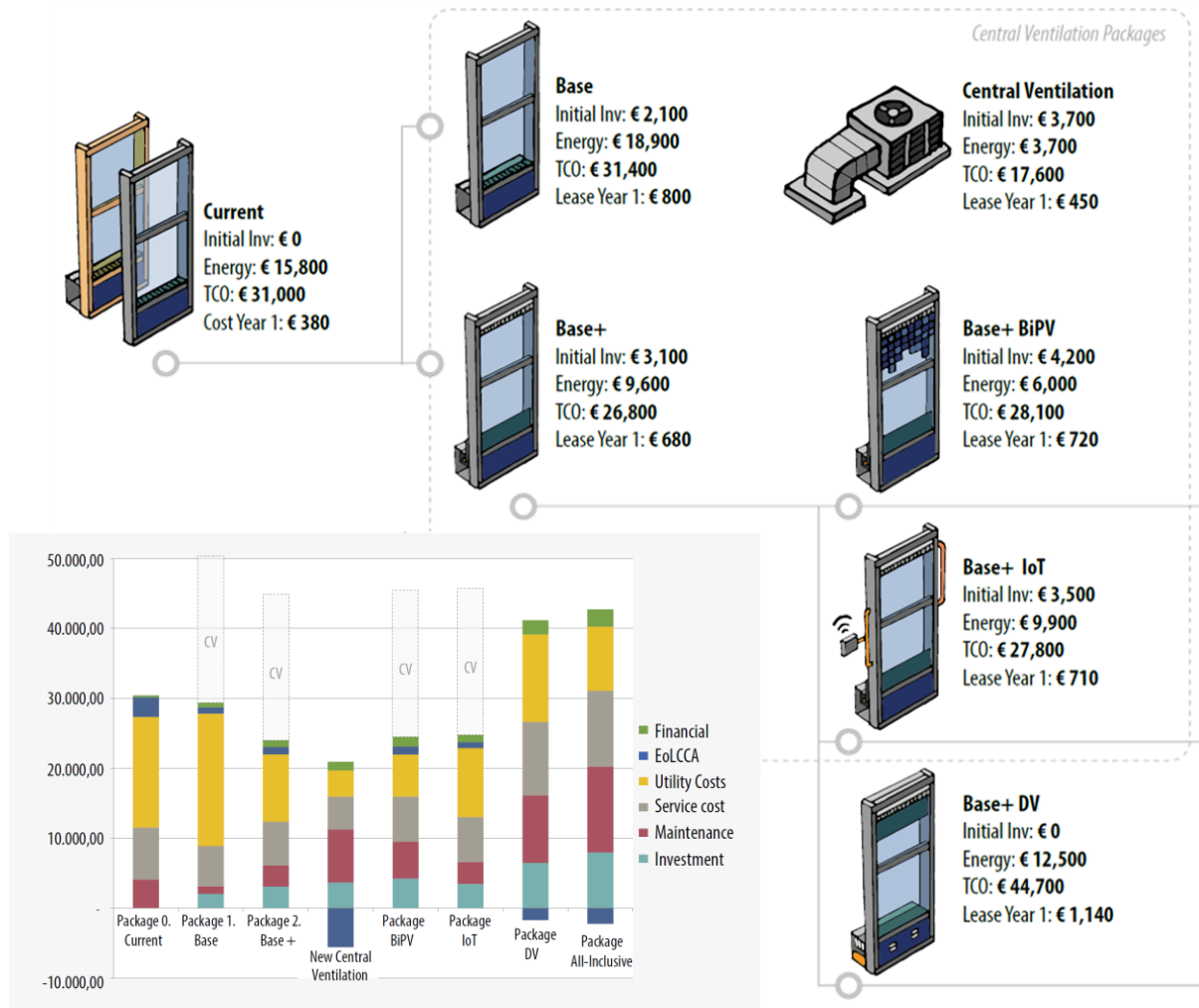
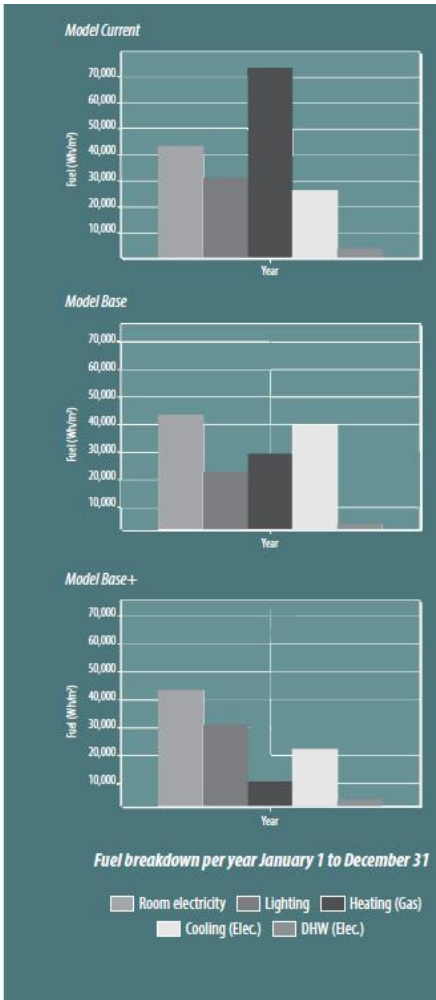
Basic Package | Model Base
New frames, glass and panel

140%



Optimized Package | Model Base+
Base + Shading and Ventilation

70%



““Het stenen tijdperk is niet gestopt omdat er geen stenen meer waren, maar omdat er iets beters voor handen kwam.”



DANK VOOR UW AANDACHT